



Future Health
2050 INTERNATIONAL
 SYMPOSIUM



CHAMPIONS AWARDS
**European
 Healthcare
 Design**

**FEB
 12**

Global perspectives

**Policy, planning and investment:
 The NHS in recovery**



LONDON
 THE KING'S FUND

info@europeanhealthcaredesign.eu

[www.europeanhealthcaredesign.eu/
 symposium-and-awards](http://www.europeanhealthcaredesign.eu/symposium-and-awards)

@EHDCongress

Organised by

Event Partners

Champions Awards
 Lead Partner

Symposium Gold
 Session Leaders





Future Health 2050 INTERNATIONAL SYMPOSIUM

Global perspectives

Policy, planning and investment: The NHS in recovery

Rising demand, fewer resources and strained finances are placing global health systems under unprecedented stress. What investment and transformation lessons can the NHS learn from how other countries are tackling healthcare's existential crisis?

In his *Independent Investigation of the NHS in England*¹, Lord Ara Darzi, highlighted how patient access to care, quality of care, and the overall productivity and performance of the NHS have been chronically weakened, laying the ground for a new 10-year plan, due to be published in the Spring.

Disastrous reforms, loss of trust and goodwill with frontline staff, the aftershocks of the pandemic and a chronic lack of capital investment, set against the backdrop of increasing demands on the health service and a deteriorating health of the nation, including widening health inequalities, are cited as the cause of the NHS's "critical condition".

Compared to its international peers, the health spending per person in the UK is below-average, lagging behind in its capital investment in physical resources and infrastructure, lower levels of clinical staff, and less competitive remuneration of key clinical staff groups. While providing good financial protection from the costs of falling ill, the UK's health system has fewer resources, a mixed record on efficiency and quality, and poorer health outcomes.²

The new Government has recognised that the NHS needs to make three big shifts in where, how and what it delivers, moving services: from hospital to the community; from analogue to digital, and from sickness to prevention.

The funding commitments in the Autumn budget announcement have been largely welcomed. A £22.6 billion increase in revenue and a £3.1 billion increase in capital over two years, with £1 billion to support backlog maintenance and the replacement RAAC hospitals, and £1.5 billion for new capacity, including beds, diagnostic technology and surgical hubs. While the investment announcements are a step in the right direction, arguably they only scratch the surface of the challenge to modernise the NHS and provide sustainable investment to upgrade its infrastructure.

Darzi's estimation of a shortfall of £37 billion of capital investment, which includes a backlog maintenance bill now reported at £13.8 bn, that has resulted in dilapidated buildings, IT and digital infrastructure that is not fit for purpose, and a lack of modernised medical technology and equipment, is directly connected to the poor productivity of the NHS, the morale of its workforce, and poor health outcomes. But what options are available to address the chronic underinvestment in capital?³

With health systems around the world facing similar challenges, what global lessons are there to share and learn from approaches to policy, planning and investment in reforming and delivering a NHS fit for the future? In this symposium, interdisciplinary healthcare leaders will explore the global and UK context for transforming health systems and investing in infrastructure.



Marc Sansom MBA
Managing director, SALUS Global
Knowledge Exchange, UK



Sunand Prasad OBE
Programme director, European Healthcare Design;
Principal, Perkins&Will, UK

1. Darzi, Ara, *Independent Investigation of the NHS in England*, September 2024

2. Anandaciva, Siva *How does the NHS compare to the healthcare systems of other countries?* The King's Fund, June 2023

3. Jones, Edward; Barron, Jonathan, *Raising NHS Capital funds: options for government*, NHS Confederation, 17 October 24



CHAMPIONS AWARDS European Healthcare Design

In celebration of ten years of the European Healthcare Design Congress, we invite you to join us at a once-in-a-decade Champions Awards Symposium and Dinner, to be held at the King's Fund London on 12 February.

Supported by Integrated Health Projects (IHP) in celebration of the best in healthcare design globally, the event will be the culmination of a new awards competition between 52 winners of the EHD Awards in six categories over the last ten years. All previous winners will also be featured on a new Champions Awards website and digital gallery.

In each category, three previous award winners will be shortlisted to win the EHD Champions of Champions Award, and invited to present live to the judges in the afternoon of 12 February, following the morning symposium.

The six EHD Champions of Champions in each award category will be announced in a celebratory Evening Awards Reception and Dinner.

Judges

Healthcare Design – Over 25,000 sqm



Kate Copeland
AHDC, Australia

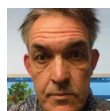


Tina Nolan
Lexica, UK



Paul Bell
Ryder Architecture, UK

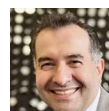
Healthcare Design – Under 25,000 sqm



Jonathan Erskine
European Health Property Network, UK



Brenda Bush-Moline
Stantec, USA



Mohammed Ayoub
HDR, USA

Mental Health Design



Beatrice Fraenkel
Design Council, UK



Cliff Harvey
Grand River Hospital, Canada



Jaime Bishop
Architects for Health, UK

Design for Health and Wellness



John Cooper
JCA, UK



Charlotte Ruben
White Arkitekter, Sweden

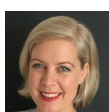


Ruairi Reeves
Medical Architecture, UK

Interior Design and Arts



Ruth Charity
Oxford University Hospitals NHS FT, UK



Nicola Bertrand
Asklepios, Germany



Femke Feenstra
GAF, Netherlands (TBC)

Design for Adaptation and Transformation



Jim Chapman
visiting professor,
Manchester Metropolitan University, UK



Chris Shaw
healthcare design writer
and commentator, UK



Christine Chadwick
Archus, Canada

Champions Awards Lead Partner



Integrated Health Projects by
VINCI BUILDING



Categories

- > Healthcare Design – Over 25,000 sqm
- > Healthcare Design – Under 25,000 sqm
- > Mental Health Design
- > Design for Health and Wellness
- > Interior Design and Arts
- > Design for Adaptation and Transformation



Agenda

08.30 Registration, welcome coffee and networking



Opening keynote: Health system policy and performance

Chair: Sunand Prasad OBE, programme director, EHD; principal, Perkins&Will, UK

Supported by

lexica.

09.00–10.15 **Panel:** Matthew Taylor, chief executive officer, NHS Confederation, UK (*invited*); Dr Charlotte Refsum, head of policy, Tony Blair Institute, UK; Matthew Tulley, redevelopment director, Imperial College Healthcare NHS Trust, UK

Lord Darzi states that “the NHS is in a critical condition”. There is consensus that recovery will require a transformation of provision from hospital to the community; from analogue to digital, and from sickness to prevention. But with an urgent need to address failing infrastructure, where will the money come from and what international lessons can be learnt?

10.15–10.45 Coffee, networking and Champions Award poster gallery



Session 2: Global perspectives: Health infrastructure and investment

Chair: Tina Nolan, managing director, Lexica, UK

Supported by

10.45–12.00 **Panel:** Richard Darch, founder, Archus, UK; Cliff Harvey, joint VP development, Grand River Hospital, Canada; Kate Copeland, chair, Australian Health Design Council, Australia; Nicola Bertrand, head of architecture and construction, Asklepios, Germany; Hank Adams, global director – health, HDR, USA

Historical underinvestment in capital compared to other OECD countries, estimated by Lord Darzi as a shortfall of £37bn, has resulted in dilapidated buildings and outdated digital infrastructure and medical technology. What funding models are available to the NHS to modernise its healthcare infrastructure, and what can it learn from our international counterparts?

12.00–13.00 Lunch, networking and Champions Awards poster gallery



Session 3a: Healthcare Design – Over 25,000 sqm

Chair: Kate Copeland, AHDC, Australia

13.00–14.15 An outstanding healthcare project in a secondary or tertiary care setting that demonstrates high levels of sustainability and urban integration, creates an effective clinical environment, promotes service improvement, and provides a supportive environment for staff, patients and their families.

14.15–14.30 Coffee, networking and Champions Awards poster gallery



Session 3b: Design for Adaptation and Transformation

Chair: Jim Chapman, Manchester Metropolitan University, UK

13.00–14.15 An outstanding healthcare project that has had a transformational impact on resolving complex and difficult service design challenges. Submissions may include but are not restricted to conversions, extensions, infills, refurbishments, exterior projects, and field hospitals.

14.15–14.30 Coffee, networking and Champions Awards poster gallery



Session 4a: Healthcare Design – Under 25,000 sqm

Chair: Jonathan Erskine, European Health Property Network

14.30–15.45 An outstanding healthcare project in a community or primary care setting that demonstrates high levels of sustainability and urban integration, transforming the quality of care services in an accessible location, and supporting the integrated needs of staff, patients and the community.

15.45–16.15 Coffee, networking and Champions Awards poster gallery



Session 4b: Mental Health Design

Chair: Beatrice Fraenkel, Design Council, UK

14.30–15.45 A mental health project that, through innovative design thinking, achieves a reconciliation between the needs of the patient/resident for a humanistic environment that supports ongoing therapy, care and recovery, and the requirement for appropriate levels of safety, security and supervision.

15.45–16.15 Coffee, networking and Champions Awards poster gallery



Session 5a: Design for Health and Wellness

Chair: John Cooper, JCA, UK

16.15–17.30 An inspirational project that encompasses services outside of traditional healthcare settings and, through an alignment of the care philosophy with the design of the environment, helps promote positive behaviours towards healthy living and wellness.



Session 5b: Interior Design and Arts

Chair: Ruth Charity, Oxford University Hospitals NHS FT, UK

16.15–17.30 An inspirational project that demonstrates exceptional skill in creating a compassionate healthcare environment that reflects and communicates the values of the healthcare provider through the integrated application of interior design with the visual arts.



Champions Awards reception, dinner and ceremony

18.00–22.00

Supported by

Speakers



Matthew Taylor
Chief executive officer,
NHS Confederation, UK *(invited)*



Dr Charlotte Refsum
Head of policy,
Tony Blair Institute, UK



Sunand Prasad
Chair, UKGBC;
Principal, Perkins&Will, UK



Tina Nolan
Founding director,
Lexica, UK



Richard Darch
Founder,
Archus, UK



Matthew Tulley
Redevelopment director,
Imperial College Healthcare NHS Trust, UK



Cliff Harvey
Joint VP development,
Grand River Hospital, Canada



Kate Copeland
Chair,
Australian Health Design Council, Australia



Nicola Bertrand
Head of architecture and construction,
Asklepios, Germany



Hank Adams
Global director – health,
HDR, USA



Registration

A range of in-person tickets for both the Symposium and the Awards Dinner are available either to buy individually or with group and/or package discounts. Individual tickets for the Symposium or a combined package of the Symposium and Awards dinner are available in two categories: public sector and commercial. Virtual tickets are also available for the Symposium.

The early-bird deadline is on 18 December, visit bit.ly/Symposium-and-Awards-registration to register today.

	Early-bird rate	Standard rate
Awards Dinner + Symposium group packages		
10 people – Award table + Symposium tickets	£2500	£3000
5 people – Award table + Symposium tickets	£1750	£2250
Awards Dinner + Symposium individual packages		
Commercial sector	£445	£545
Public sector	£345	£445
Evening Awards Dinner single ticket		
Awards dinner	£265	£365
Day Symposium individual registration		
Commercial sector	£245	£345
Public sector	£145	£245
Virtual	£75	£125



The venue – The King’s Fund

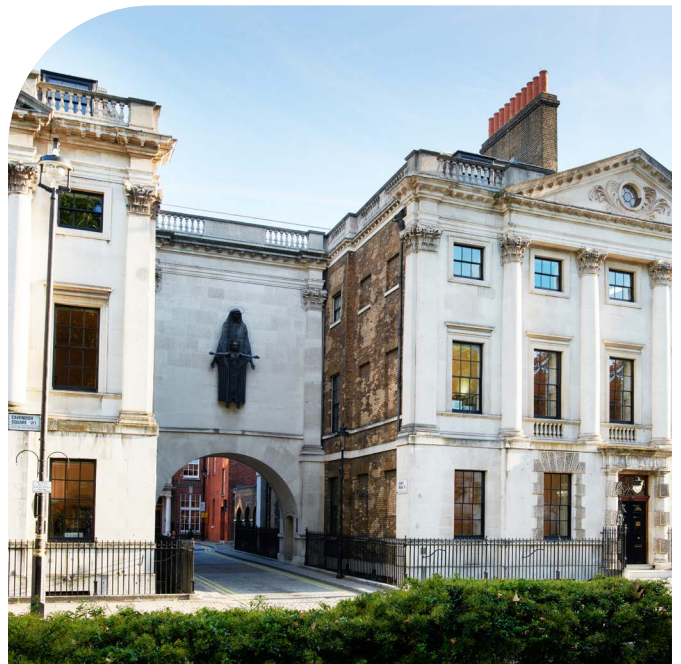
The Future Health 2050 International Symposium and the European Healthcare Design Champions Awards will be hosted at The King’s Fund in a Grade II listed Georgian townhouse, overlooking Cavendish Square. The accredited venue, includes a 282-seater lecture theatre with built-in audiovisual and streaming facilities, with period features and a beautiful Orangery.

As an independent charitable organisation working to improve health and care in England, the King’s Fund’s vision is that the best possible health and care is available to all, making the venue an ideal partner for this event.

Situated in the heart of London’s West End, the venue is within walking distance of Oxford Circus and Bond Street stations.

For hotel recommendations please contact info@europeanhealthcaredesign.eu

Address No.11 Cavendish Square, W1G 0AN
Website www.11cavendishsq.com



For further enquiries on the event programme, sponsorship or exhibition opportunities, contact:
SALUS Global Knowledge Exchange
E: info@salus.global • T: +44 (0)1277 634176

www.europeanhealthcaredesign.global/symposium-and-awards